

Session-Webservice

1 Introduction

The web service should be set up by an IT specialist. WSDL is a common standard for web services on the internet.

Please understand that the Ministry of Finance and the FinanzOnline-Hotline cannot provide guidance as regards technical difficulties occurring during the installation of the web service.

The web service is compatible with a wide variety of programs on almost any platform (e.g. Java).

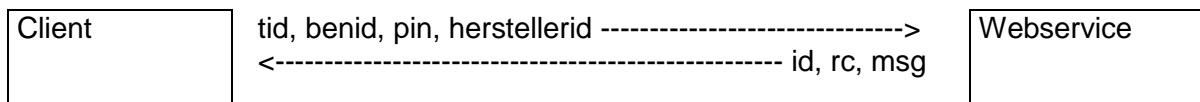
2 Requirements for the Web Service

- A registration for FinanzOnline.
- A user for the web service, which can be created in the user administration of FinanzOnline.
- The web service can be used only by the above mentioned user.

3 Procedure

The document for the WSDL-Service is available at <https://finanzonline.bmf.gv.at/fonws/ws/sessionService.wsdl>

3.1 Login



- **Connect**

Encrypted connection using a FinanzOnline certificate

- **Set Parameters**

The parameters for using the web service must be set as follows:

- | | | |
|--------------|---|---|
| tid | = | 'Subscriber-Identification' |
| benid | = | 'User-Identification of the web service user', created in the user administration of FinanzOnline |
| pin | = | 'Pin of the web service user' |
| herstellerid | = | The VAT-Identification number of the software producer |

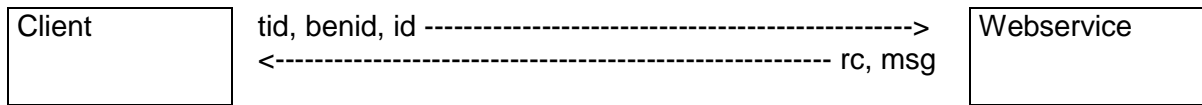
- **Select method 'login'**

- **Evaluate Response**

A SessionID and a return code or a return code and a message will be sent back.

With the SessionID, further services (e.g. File-Upload, Databox-Download, VAT-Number Validation) can be processed.

3.2 Logout



- **Set Parameters**

The parameters for using the web service must be set as follows:

tid	=	'Subscriber-Identification'
benid	=	'User-Identification of the web service user'
id	=	SessionID (see method <i>'login'</i>)

- **Select Method *'logout'***

4 Return Codes

If a technical error occurs in the web service, a SOAP exception is triggered. Errors are reported by way of a return code and a message.

Meaning of the return codes:

0 = Upload ok

-1 = The session ID is invalid or expired.

-2 = The web service is currently not available due to maintenance work.

-3 = A technical error has occurred.

-4 = The access codes are not valid.

-5 = The user is locked because of several incorrect login attempts.

-6 = The user is locked.

-7 = The user is not a web service user.

-8 = The participant is locked for FinanzOnline or not authorized to use the web service